

BI Component	Data Extraction
Description	Extracting Values from DDIC Domains
Date	June 2009

Disclaimer

User confirms that this information is being provided without compensation or consideration, and that contract or privity is established with the provider. Data contained in this document serves informational, discussion and educational purposes only. Reliance on this data and these materials without independent determination of their applicability, compatibility, appropriateness, completeness and accuracy is not warranted or authorized. These materials are provided "as is" without a warranty of any kind, either express or implied, including but not limited to, the implied warranties of merchantability, fitness for a particular purpose, or non-infringement. Claricent, Inc. shall not be liable for damages of any kind including without limitation direct, special, indirect, or consequential damages that may result from the use of these materials. Claricent, Inc. does not warrant the accuracy or completeness of the information, text, graphics, links or other items contained within these materials. Each user must use his/her/its independent professional judgment as to the suitability of any material to the user's application, use and/or system, and the accuracy and completeness of same. Claricent, Inc. has no control over the information that you may access through the use of hot links contained in these materials and does not recommend and/or endorse your use of third party web pages nor provide any warranty whatsoever relating to third party web pages. Claricent, Inc. does not warrant the correctness and completeness of the Code given herein, and Claricent, Inc. shall not be liable for errors or damages caused by the usage of the Code, with the sole exception of damages caused by Claricent, Inc. intentionally or by grossly negligent conduct.

1. Overview

Often there is the need to extract Master Data values for which there is no specific Master Data table. This can occur when an application uses Domain Value Ranges for authorized value lists. The following steps detail how to create a custom extractor to extract a Value List from a DDIC domain.

2. Background

DDIC Domain Value Ranges and corresponding texts are stored in the tables DD07L and DD07T respectively.

Table	Description
DD07L	R/3 DD: Values for the Domains
DD07T	DD: Texts for Domain Fixed Values (Language Dependent)

Two separate datasources, one for the Master Data values and one for the texts will be created.

Selection is made from DD07L where:

DOMNAME
AS4LOCAL

= [DDIC domain technical name]
= 'A'

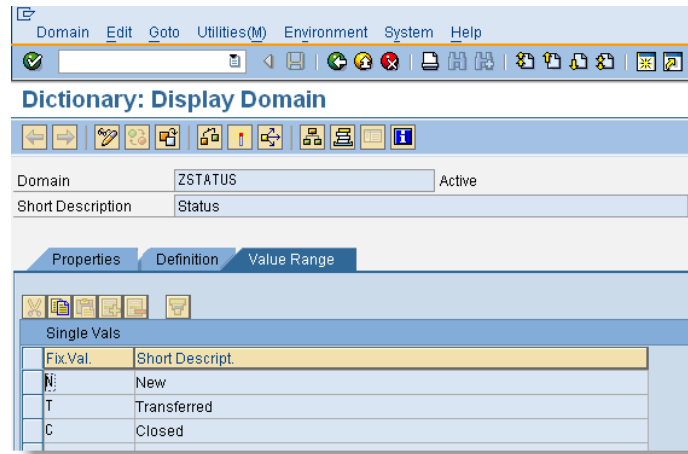
Selection is made from DD07T where:

DOMNAME
DDLANGUAGE
AS4LOCAL

= [domain technical name]
= 'E'
= 'A'

3. Implementation Details

Review the domain and the associated value list that will be extracted (transaction SE11).



Lookup table DD07L to confirm the attribute entries of the domain. (Transaction SE16).

The screenshot shows the SAP Data Browser: Table DD07L Select Entries window. The table displays the following data:

DOMNAME	AS4LOCAL	VALPOS	AS4VERS	DOMVALUE_L	DOMVALUE_H	APPVAL
ZSTATUS	A	0001	0000	N		
ZSTATUS	A	0002	0000	T		
ZSTATUS	A	0003	0000	C		

Lookup table DD07T to confirm the text entries of the domain.

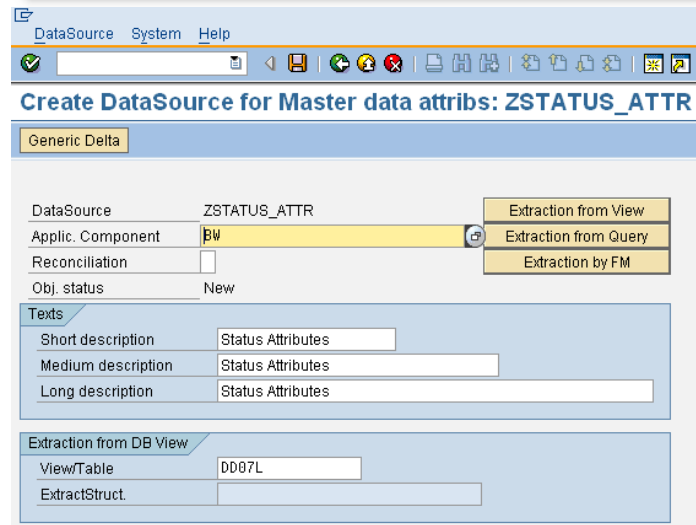
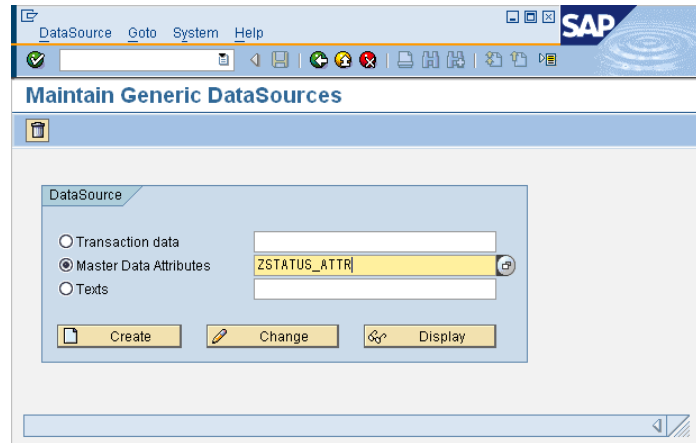
The screenshot shows the SAP Data Browser: Table DD07T Select Entries window. The table displays the following data:

DOMNAME	DDLANGUAGE	AS4LOCAL	VALPOS	AS4VERS	DDTEXT
ZSTATUS	E	A	0001	0000	New
ZSTATUS	E	A	0002	0000	Transferred
ZSTATUS	E	A	0003	0000	Closed

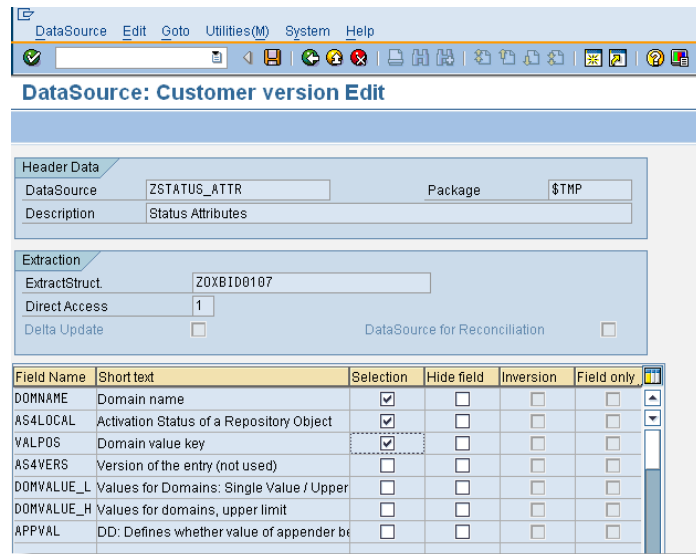
Create a Master Data Datasource off of the tables (transaction RS02).

In this example the datasource ZSTATUS_ATTR is created for table DD07L.

Repeat the following steps for the creation of a text datasource ZSTATUS_TEXT for table DD07T.



Set the fields needed as selection fields for the datasource. → Save. → Save.



Test the datasource via transaction RSA3. Enter the datasource name, and the following values in the selection fields:

- AS4LOCAL = 'A'
- DOMNAME = [Domain Name]
- VALPOS = [leave blank].

➔ Execute

